

Condition:

When replacing an ETACS-ECU variant coding has to be performed.

The variant coding file should be copied from the original ECU before the ECU is replaced. If it's not possible to copy the variant coding file from the original ECU the variant coding file can be obtained from M.U.T.-III because the variant coding files are included in the M.U.T.-III diagnostic software.

In cases where it's not possible to copy the variant coding file and it's also not included in the M.U.T.-III diagnostic software the Dealer should request the correct coding file from his Distributor.

To obtain the correct variant coding file you need to have the VIN and the ECU part number.

-Carry out procedure 1 if an ETACS-ECU is replaced. (Customisation file has to be copied as well from the ETACS-ECU)

-Carry out procedure 2 to store the variant coding file into M.U.T.-III.

Note: Option coding will change the original variant coding file.

If it's not possible to copy the variant coding file and customisation file, you have to do the option coding and customisation again after variant coding has been performed on the new ETACS-ECU.

To perform option coding select following items in M.U.T.-III:

- 1) ETACS
- 2) Coding
- 3) Option Coding

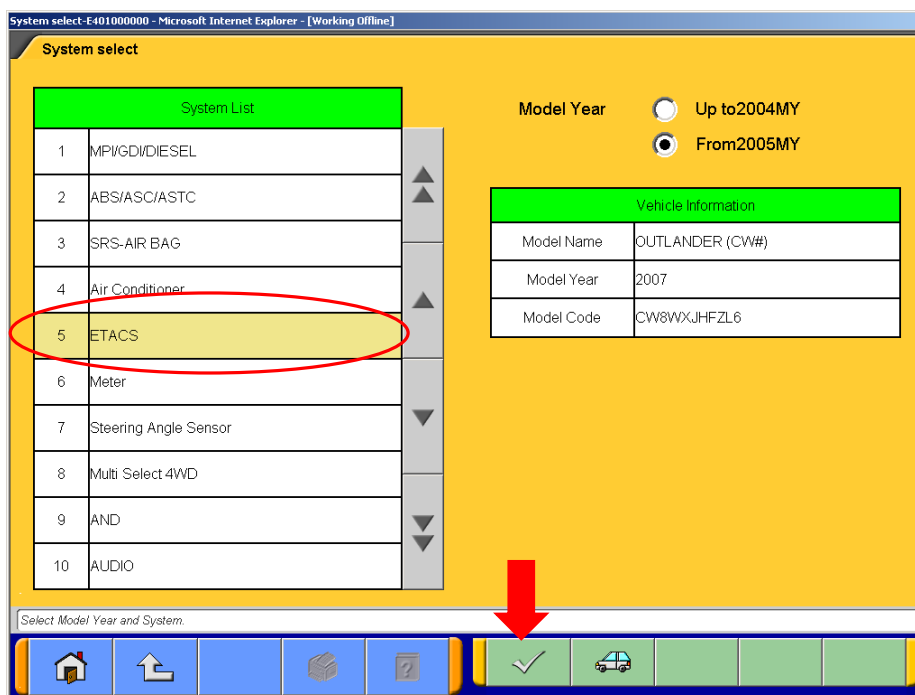
To perform Customisation select following items in M.U.T.-III:

- 1) ETACS
- 2) Special Function
- 3) Customisation

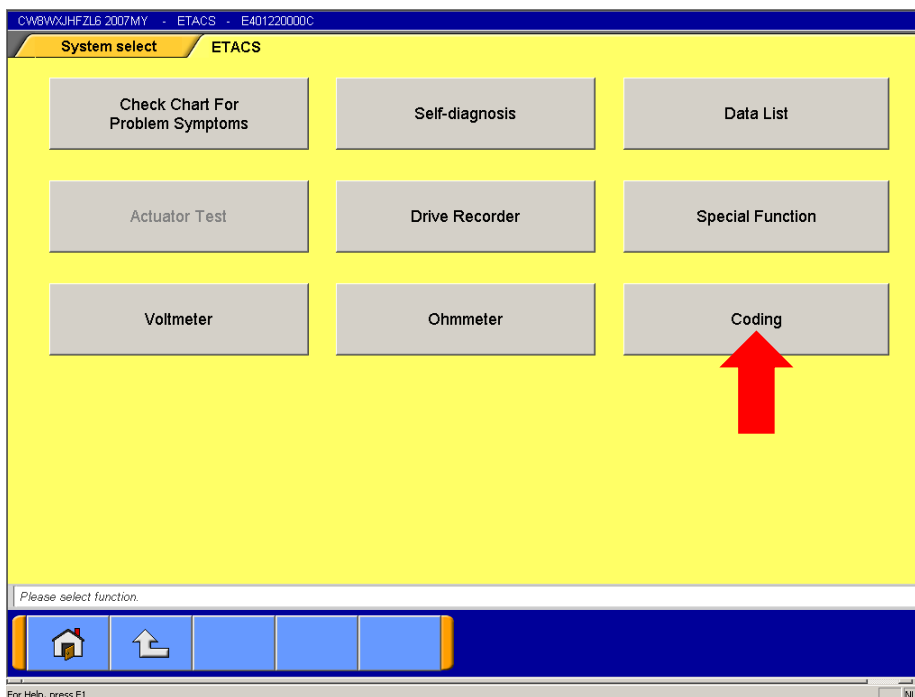
Procedure 1) Variant coding when replacing an ETACS-ECU.

Note: This procedure starts with the existing ECU (the one that is going to be replaced, NOT with the new ECU)

Step 1) Select ETACS (make sure the correct vehicle is chosen in the box "Vehicle Information")



Step 2) Select Coding.

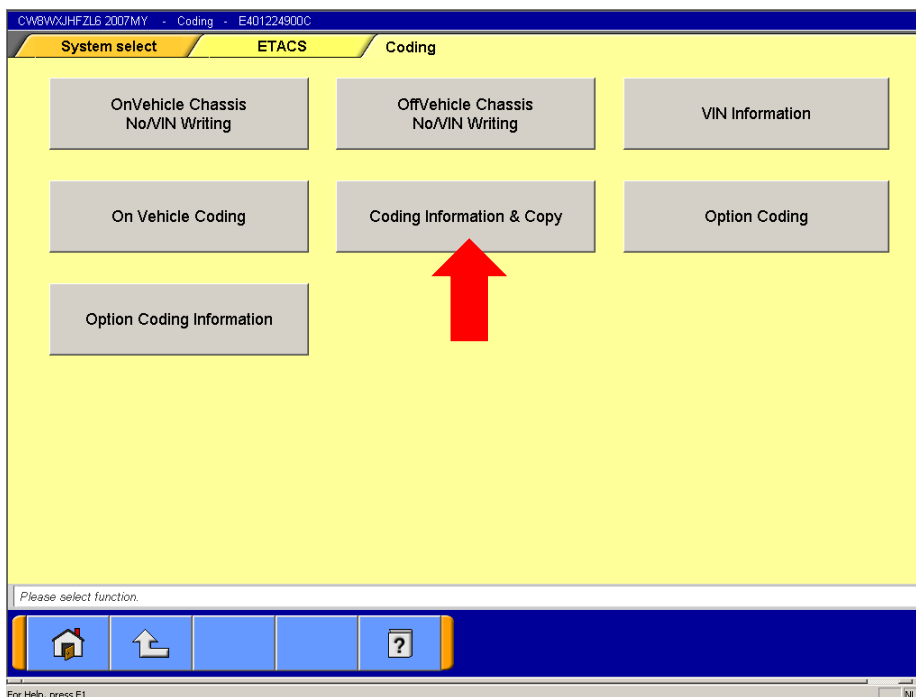


Note: For all technical and or warranty matters, please contact MME, Technical Service.

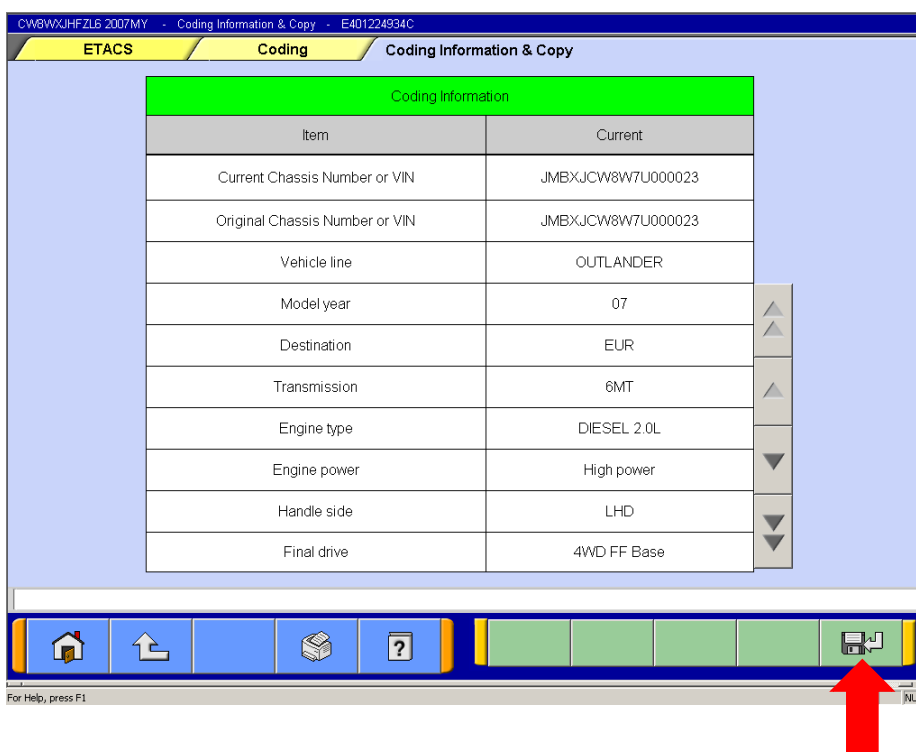
This Newsletter is NOT AN AUTHORISATION for retro fit to all vehicles, only upon receipt of a customer complaint.

© Copyright Mitsubishi Motors Europe B.V. 2007

Step 3) Select Coding Information & Copy.



Step 4) Select to copy the variant coding file from the ECU to M.U.T.-III.

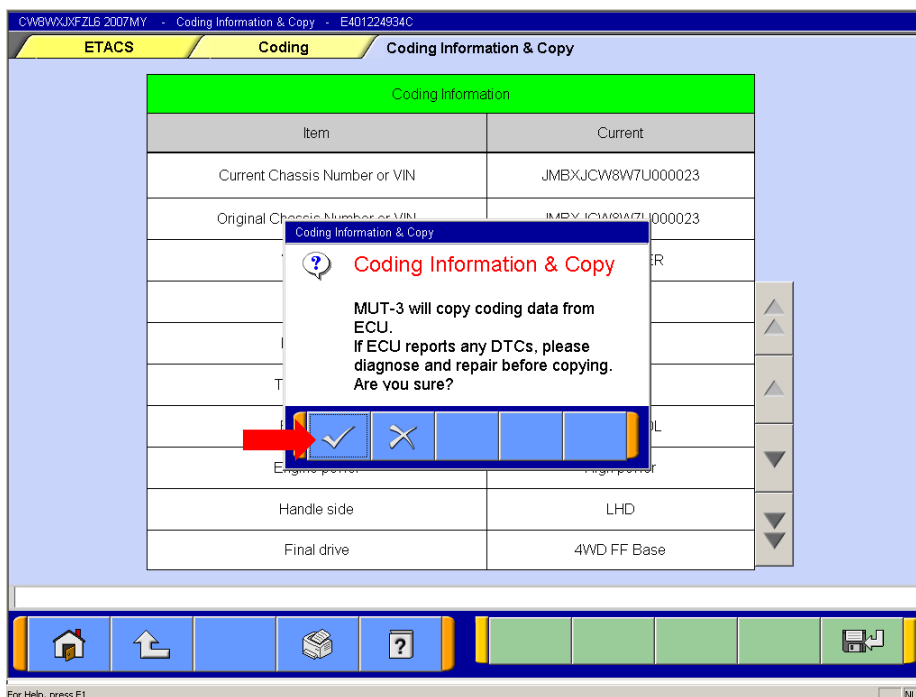


Note: For all technical and or warranty matters, please contact MME, Technical Service.

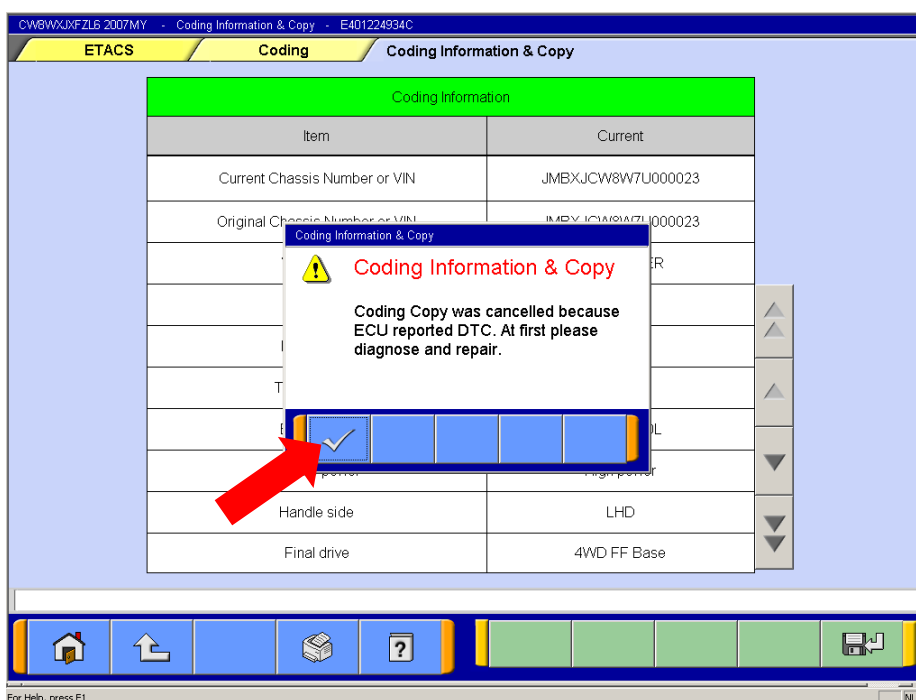
This Newsletter is NOT AN AUTHORISATION for retro fit to all vehicles, only upon receipt of a customer complaint.

© Copyright Mitsubishi Motors Europe B.V. 2007

Step 5) Click  button to confirm copy coding.




Note: If below screen appears then first erase/solve any DTC.

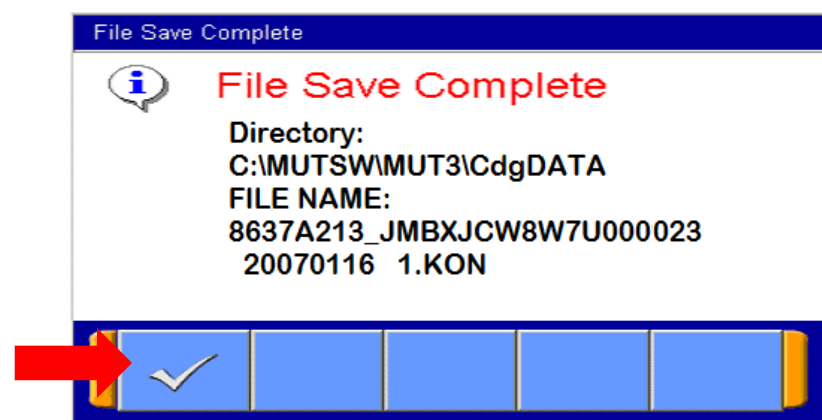



Note: For all technical and or warranty matters, please contact MME, Technical Service.

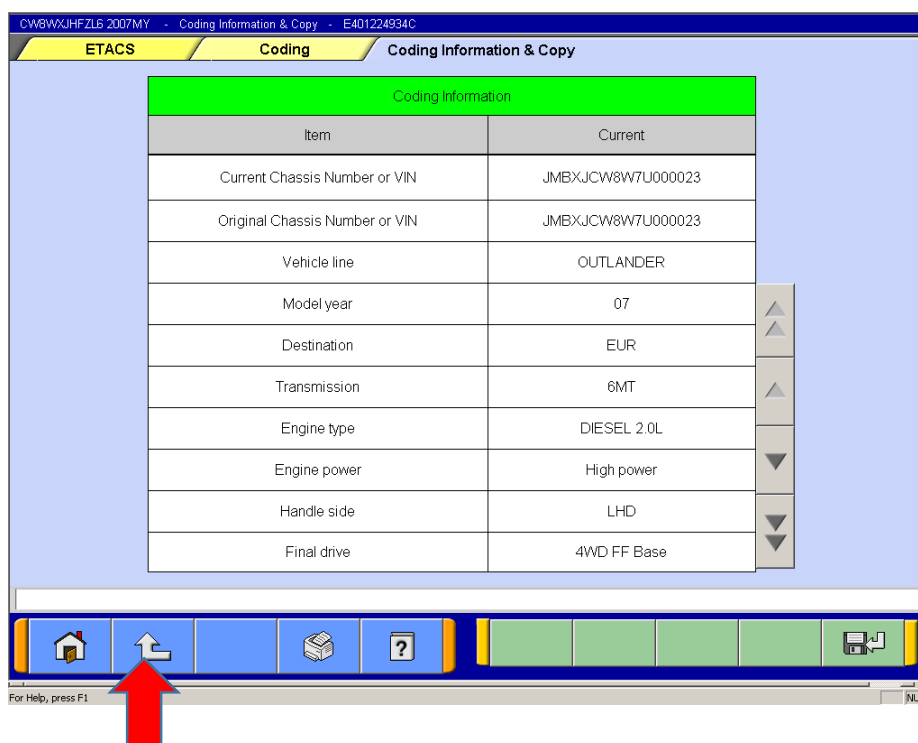
This Newsletter is NOT AN AUTHORISATION for retro fit to all vehicles, only upon receipt of a customer complaint.

© Copyright Mitsubishi Motors Europe B.V. 2007

Step 6) If the screen below appears the variant coding file has successfully been copied to M.U.T.-III, click  to continue.



Step 7) Click  2 times to return to the general ETACS screen menu.

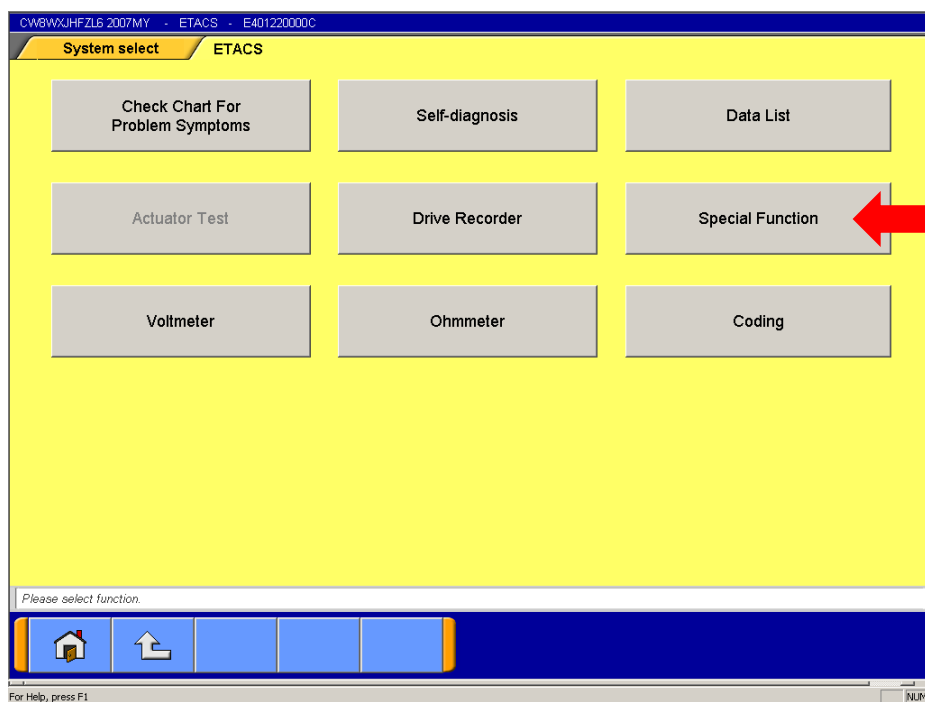


Note: For all technical and or warranty matters, please contact MME, Technical Service.

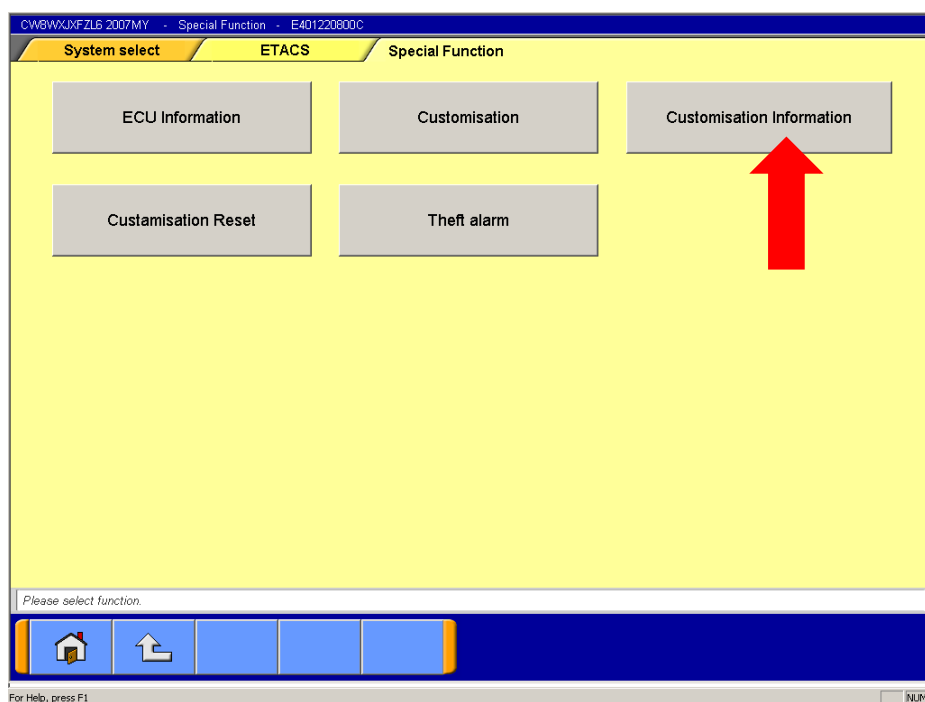
This Newsletter is NOT AN AUTHORISATION for retro fit to all vehicles, only upon receipt of a customer complaint.

© Copyright Mitsubishi Motors Europe B.V. 2007

Step 8) Select Special Function.



Step 9) Select Customisation Information.



Note: For all technical and or warranty matters, please contact MME, Technical Service.

This Newsletter is NOT AN AUTHORISATION for retro fit to all vehicles, only upon receipt of a customer complaint.

© Copyright Mitsubishi Motors Europe B.V. 2007

Step 10) Click  to copy the customisation file from the ECU to M.U.T.-III.

CWBWXXFZL6 2007MY - Customisation Information - E401220867C

ETACS **Special Function** **Customisation Information**

Customisation Information	
Item	Current
Turn power source	IG1
Comfort flasher	Enable
Hazard answer back	Lock1, Unlock2
Front wiper operation	Speed Sensitive
Front wiper washer	Washer&Wiper
Intermittent time of rear wiper	8sec
Rear wiper Low speed mode	Disable
Auto fold mirror	Open Vehicle SPD
Sensitivity for auto light	Level 2
Auto light linked wiper	Disable

For Help, press F1

Saved at harddisk

Step 11) Click  button to confirm customisation data is saved.

CWBWXXFZL6 2007MY - Customisation Information - E401220867C

ETACS **Special Function** **Customisation Information**

Customisation Information	
Item	Current
Turn power source	IG1
Comfort flasher	Enable
Hazard answer back	Lock1, Unlock2
Front wiper operation	Speed Sensitive
Front wiper washer	Washer&Wiper
Intermittent time of rear wiper	8sec
Rear wiper Low speed mode	Disable
Auto fold mirror	Open Vehicle SPD
Sensitivity for auto light	Level 2
Auto light linked wiper	Disable

Customisation Information

Customisation data is saved as a file.
Are you sure?

For Help, press F1

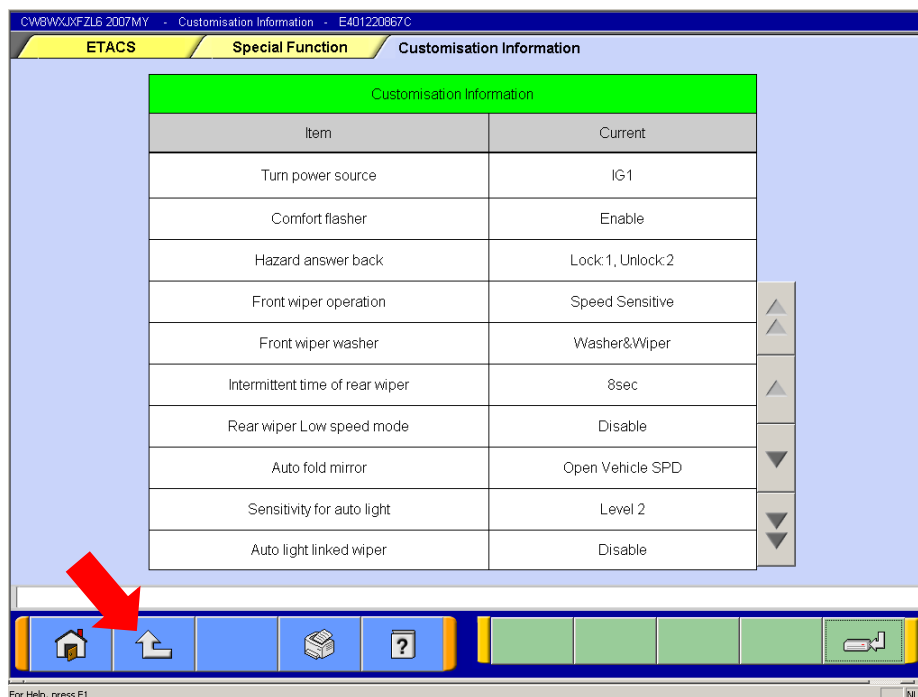
NUM

Note: For all technical and or warranty matters, please contact MME, Technical Service.

This Newsletter is NOT AN AUTHORISATION for retro fit to all vehicles, only upon receipt of a customer complaint.

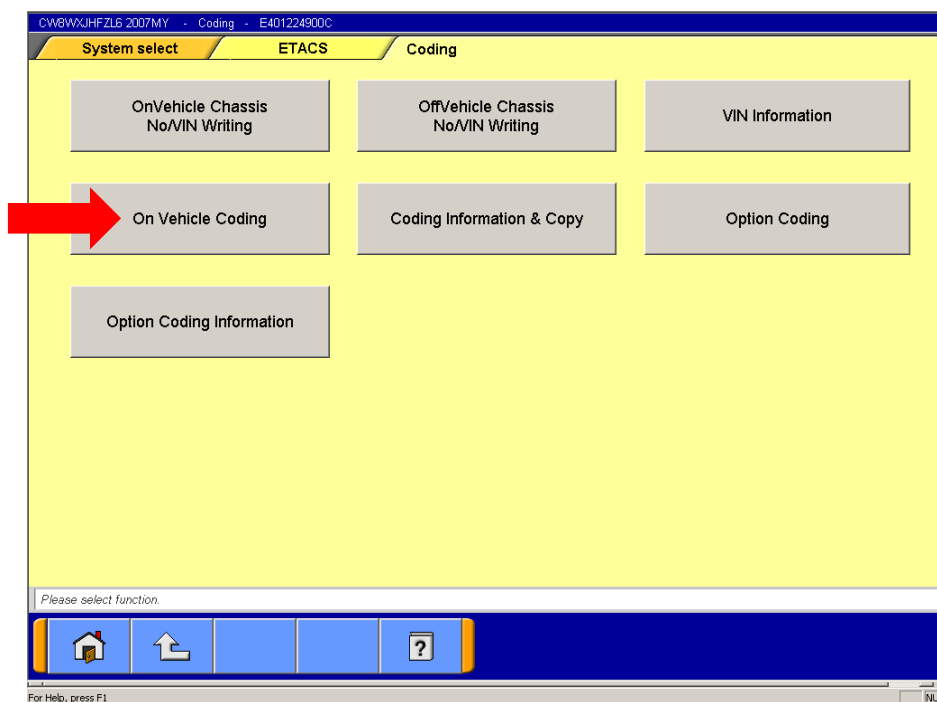
© Copyright Mitsubishi Motors Europe B.V. 2007

Step 12) Click  2 times return to the general ETACS screen.



Note: ETACS-ECU can be replaced now. After replacement proceed with step 13.

Step 13) Select On Vehicle Coding. (Follow step 1 and 2 of this procedure to get to M.U.T.-III screen as below)



Note: For all technical and or warranty matters, please contact MME, Technical Service.

This Newsletter is NOT AN AUTHORISATION for retro fit to all vehicles, only upon receipt of a customer complaint.

© Copyright Mitsubishi Motors Europe B.V. 2007



Step 14) Confirm new ECU is installed by clicking



CW6WJHFZL6 2007MY - On Vehicle Coding - E401014928C

MPI/GDI/DIESEL Coding On Vehicle Coding

Chassis Number or VIN

1	2	3	On Vehicle Function				9	0	
Q	W	E	 On Vehicle Function Execute this function, where ECU is installed in Vehicle. Warning: if it executes when ECU is not installed in Vehicle, DTC will occur.				O	P	
A	S	D					L		
Z	X	C							
							Back Space	Clear	

Input Chassis Number or VIN, and press the OK button.

For Help, press F1

Step 15) Enter VIN and click



CW6WJHFZL6 2007MY - On Vehicle Coding - E401224928C

ETACS Coding On Vehicle Coding

Chassis Number or VIN **JMBXJCW8W7U000023**

1	2	3	4	5	6	7	8	9	0	
Q	W	E	R	T	Y	U	I	O	P	
A	S	D	F	G	H	J	K	L		
Z	X	C	V	B	N	M	-			
									Back Space	Clear

Input Chassis Number or VIN, and press the OK button.

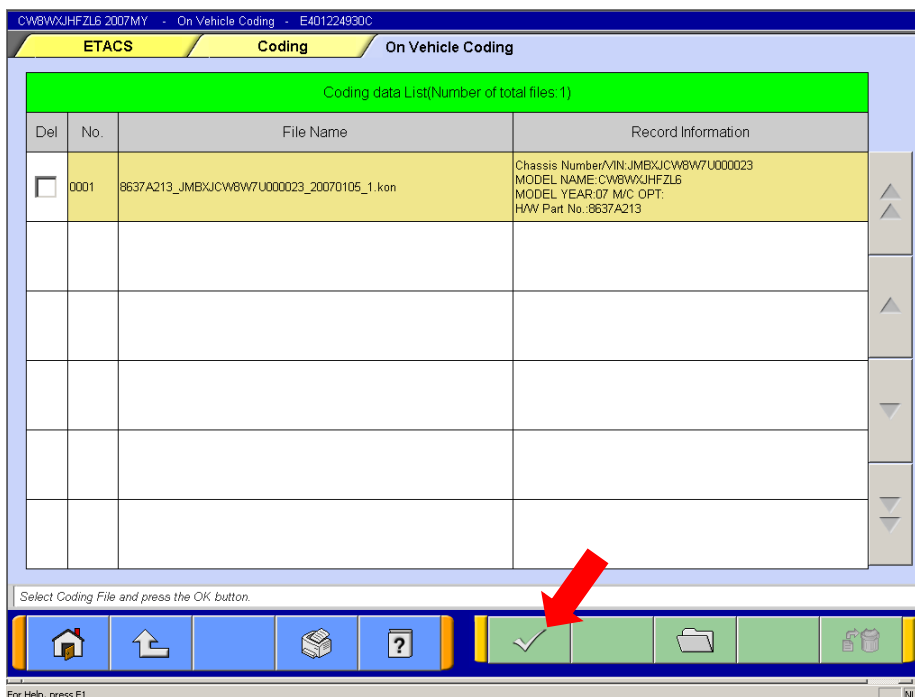
For Help, press F1

Note: For all technical and or warranty matters, please contact MME, Technical Service.

This Newsletter is NOT AN AUTHORISATION for retro fit to all vehicles, only upon receipt of a customer complaint.

© Copyright Mitsubishi Motors Europe B.V. 2007

Step 16) Click  to select the coding file.



CW6WJHFZL6 2007MY - On Vehicle Coding - E401224930C

ETACS Coding On Vehicle Coding

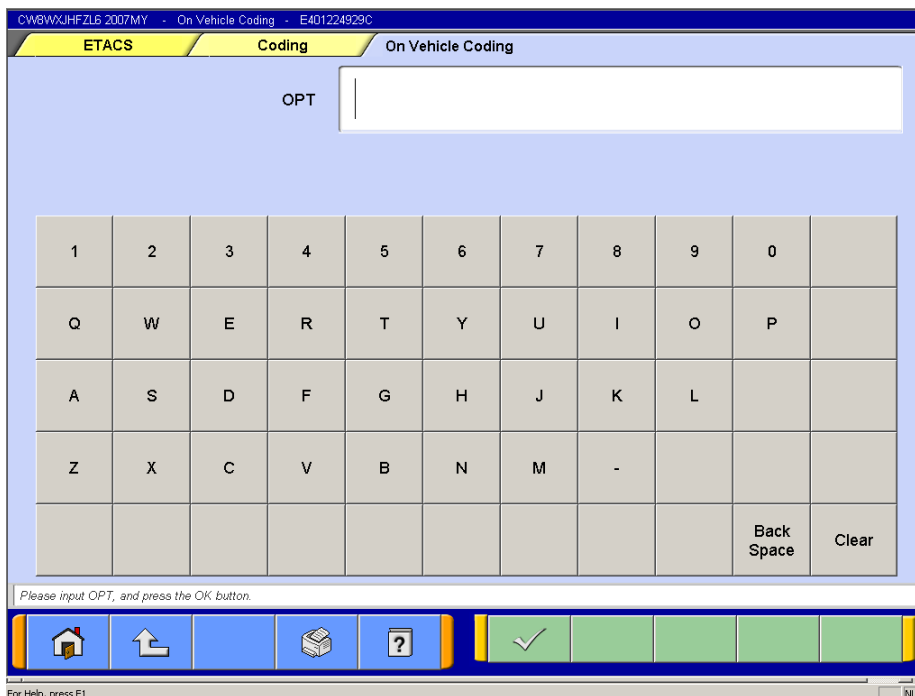
Coding data List(Number of total files: 1)

Del	No.	File Name	Record Information
<input type="checkbox"/>	0001	8637A213_JMBXJCW6W7U000023_20070105_1.kon	Chassis Number/VIN: JMBXJCW6W7U000023 MODEL NAME: CW6WJHFZL6 MODEL YEAR: 07 M/C OPT: H/W Part No. 8637A213

Select Coding File and press the OK button.

For Help, press F1

Note: If following screen appears instead of the screen mentioned at step 16 the variant coding data file is not available in MUT-III. Follow procedure 3 for installing the variant coding data file in to M.U.T.-III.



CW6WJHFZL6 2007MY - On Vehicle Coding - E401224929C

ETACS Coding On Vehicle Coding

OPT

1	2	3	4	5	6	7	8	9	0	
Q	W	E	R	T	Y	U	I	O	P	
A	S	D	F	G	H	J	K	L		
Z	X	C	V	B	N	M	-			
									Back Space	Clear

Please input OPT, and press the OK button.

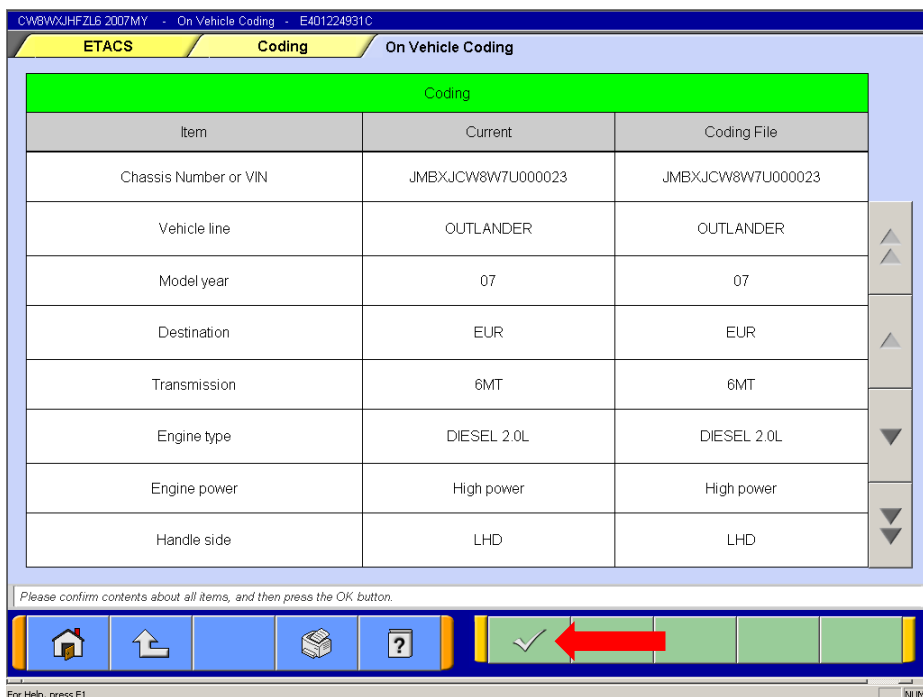
For Help, press F1

Note: For all technical and or warranty matters, please contact MME, Technical Service.

This Newsletter is NOT AN AUTHORISATION for retro fit to all vehicles, only upon receipt of a customer complaint.

© Copyright Mitsubishi Motors Europe B.V. 2007


Step 17) Click  button to start on vehicle coding.

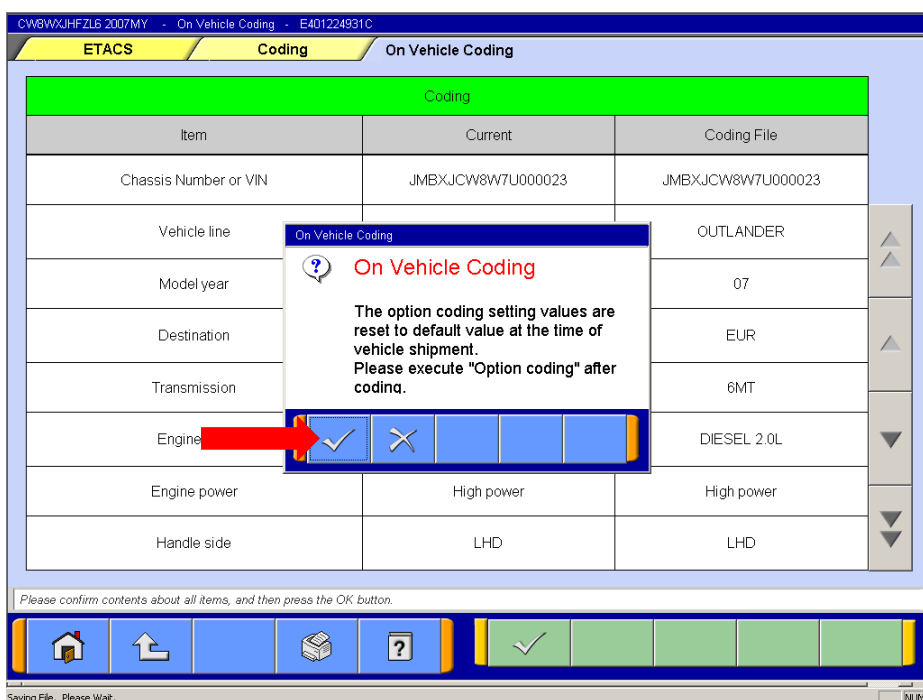


Item	Current	Coding File
Chassis Number or VIN	JMBXJCW8W7U000023	JMBXJCW8W7U000023
Vehicle line	OUTLANDER	OUTLANDER
Model year	07	07
Destination	EUR	EUR
Transmission	6MT	6MT
Engine type	DIESEL 2.0L	DIESEL 2.0L
Engine power	High power	High power
Handle side	LHD	LHD

Please confirm contents about all items, and then press the OK button.

For Help, press F1

Step 18) Click  button to confirm on vehicle coding.



Item	Current	Coding File
Chassis Number or VIN	JMBXJCW8W7U000023	JMBXJCW8W7U000023
Vehicle line	OUTLANDER	OUTLANDER
Model year	07	07
Destination	EUR	EUR
Transmission	6MT	6MT
Engine	DIESEL 2.0L	DIESEL 2.0L
Engine power	High power	High power
Handle side	LHD	LHD

Please confirm contents about all items, and then press the OK button.

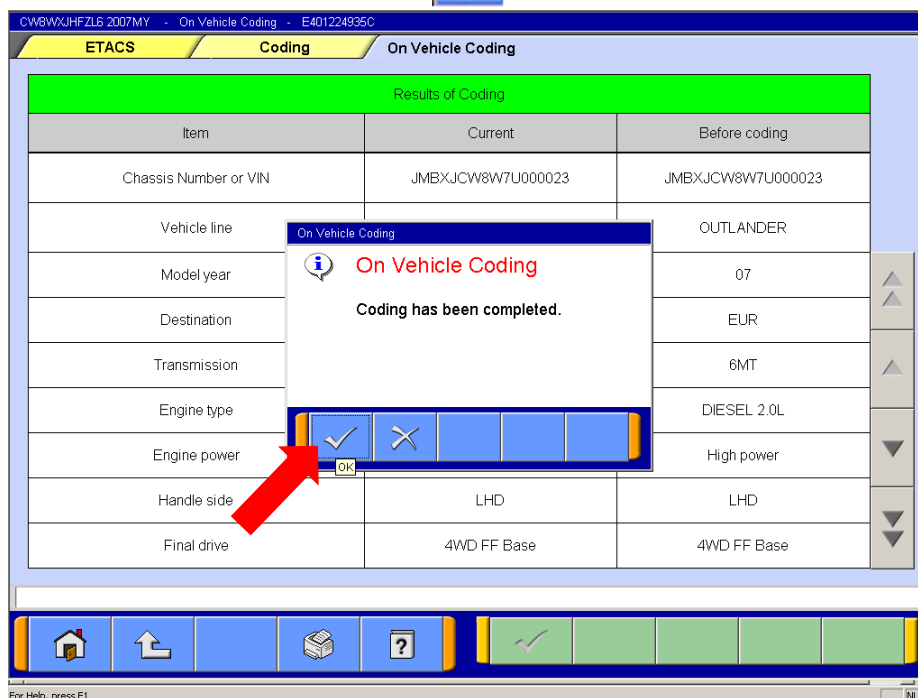
Saving File. Please Wait.

Note: For all technical and or warranty matters, please contact MME, Technical Service.

This Newsletter is NOT AN AUTHORISATION for retro fit to all vehicles, only upon receipt of a customer complaint.

© Copyright Mitsubishi Motors Europe B.V. 2007

Step 19) Coding has been completed, click  to continue.



ETACS Coding On Vehicle Coding

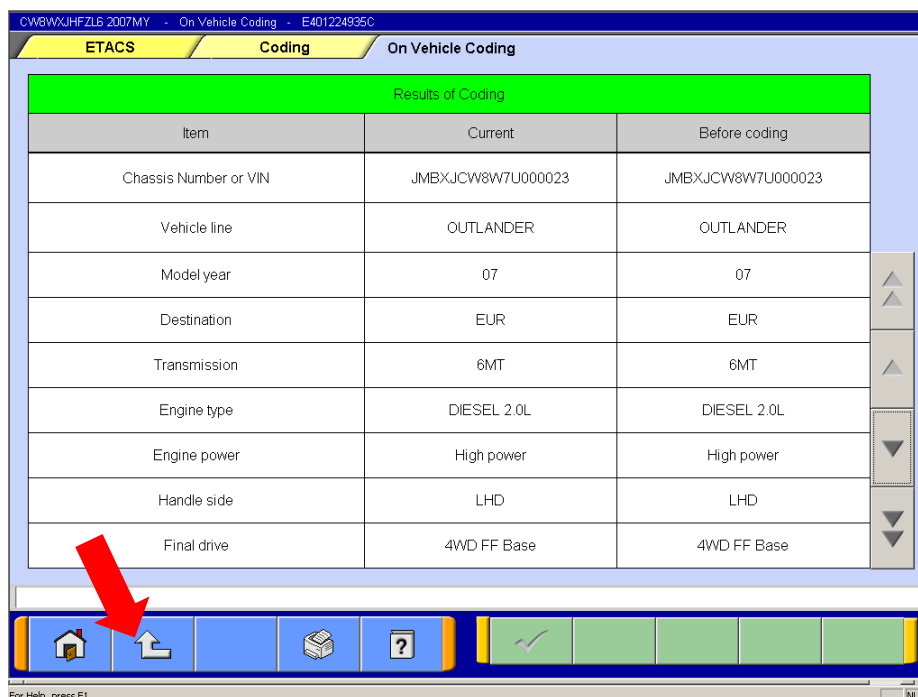
Results of Coding

Item	Current	Before coding
Chassis Number or VIN	JMBXJCW8W7U000023	JMBXJCW8W7U000023
Vehicle line	OUTLANDER	OUTLANDER
Model year	07	07
Destination	EUR	EUR
Transmission	6MT	6MT
Engine type	DIESEL 2.0L	DIESEL 2.0L
Engine power	High power	High power
Handle side	LHD	LHD
Final drive	4WD FF Base	4WD FF Base

On Vehicle Coding
On Vehicle Coding
Coding has been completed.

For Help, press F1

Step 20) Results of coding are being displayed; this is just for your reference.



ETACS Coding On Vehicle Coding

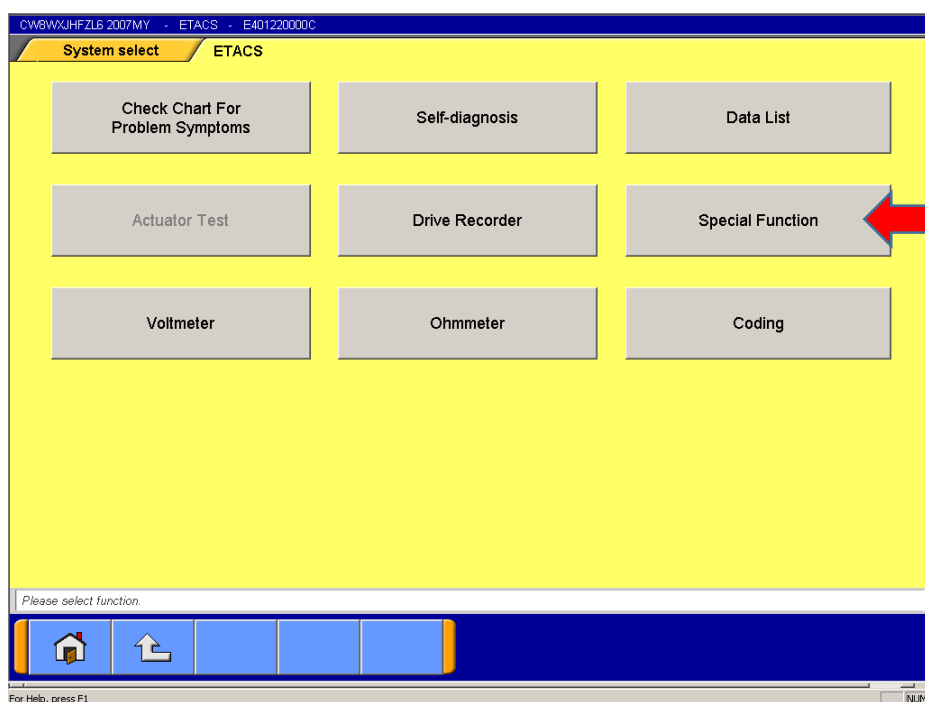
Results of Coding

Item	Current	Before coding
Chassis Number or VIN	JMBXJCW8W7U000023	JMBXJCW8W7U000023
Vehicle line	OUTLANDER	OUTLANDER
Model year	07	07
Destination	EUR	EUR
Transmission	6MT	6MT
Engine type	DIESEL 2.0L	DIESEL 2.0L
Engine power	High power	High power
Handle side	LHD	LHD
Final drive	4WD FF Base	4WD FF Base

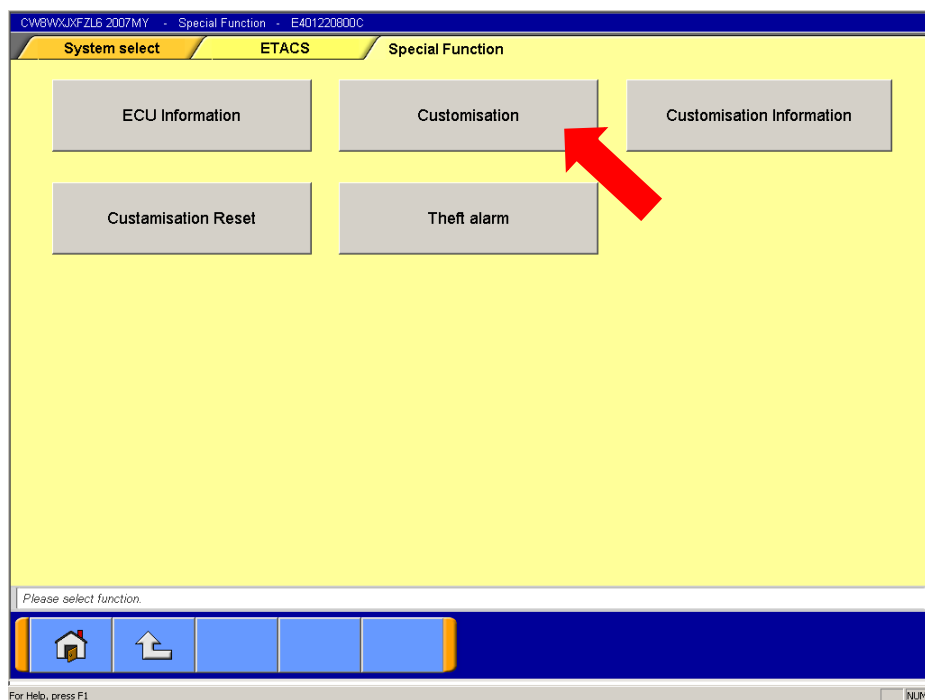
For Help, press F1

Variant coding has been successfully completed. Click  2 times to return to the general ETACS screen and to continue with customisation.

Step 21) Select Special Function.




Step 22) Select Customisation.



Note: For all technical and or warranty matters, please contact MME, Technical Service.

This Newsletter is NOT AN AUTHORISATION for retro fit to all vehicles, only upon receipt of a customer complaint.

© Copyright Mitsubishi Motors Europe B.V. 2007

Step 23) Click  to find the copied customisation file.

CW8WXJFZL6 2007MY - Customisation - E401220866C


ETACS **Special Function** **Customisation**

Customisation		
Item	Current	New
Turn power source	IG1	IG1
Comfort flasher	Enable	Enable
Hazard answer back	Lock 1, Unlock 2	Lock 1, Unlock 2
Front wiper operation	Speed Sensitive	Speed Sensitive
Front wiper washer	Washer&Wiper	Washer&Wiper
Intermittent time of rear wiper	8sec	8sec
Rear wiper Low speed mode	Disable	Disable
Auto fold mirror	Open Vehicle SPD	Open Vehicle SPD

Please set the value, and then press the OK button to set the New value.

For Help, press F1

NUM

Step 24) Click  to select the customisation file.

CW8WXJFZL6 2007MY - Customisation - E401220866C

ETACS **Special Function** **Customisation**

Customisation data List(Number of total files: 1)			
Del	No.	File Name	Record Information
<input type="checkbox"/>	0001	8637A213_JMBXJCW8W7U000023_20070119_1.cuf	Chassis Number/VIN: JMBXJCW8W7U000023 MODEL NAME: CW8WXJFZL6 MODEL YEAR: 07 M/C OPT: H/W Part No. 8637A213

Select Customisation Files and Press OK button.

For Help, press F1

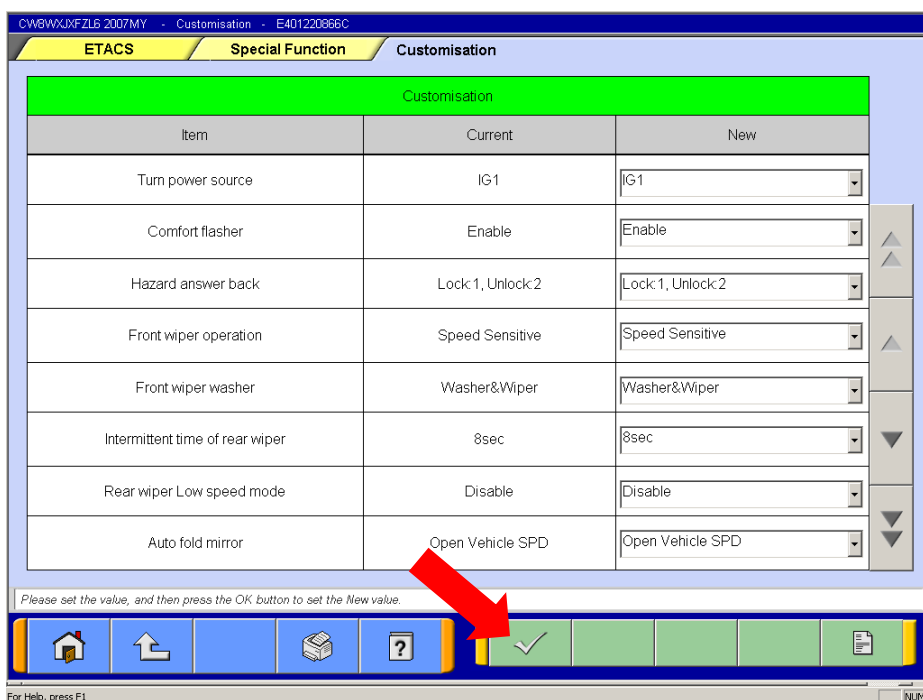
NUM

Note: For all technical and or warranty matters, please contact MME, Technical Service.

This Newsletter is NOT AN AUTHORISATION for retro fit to all vehicles, only upon receipt of a customer complaint.

© Copyright Mitsubishi Motors Europe B.V. 2007

Step 25) Click  to start customisation.

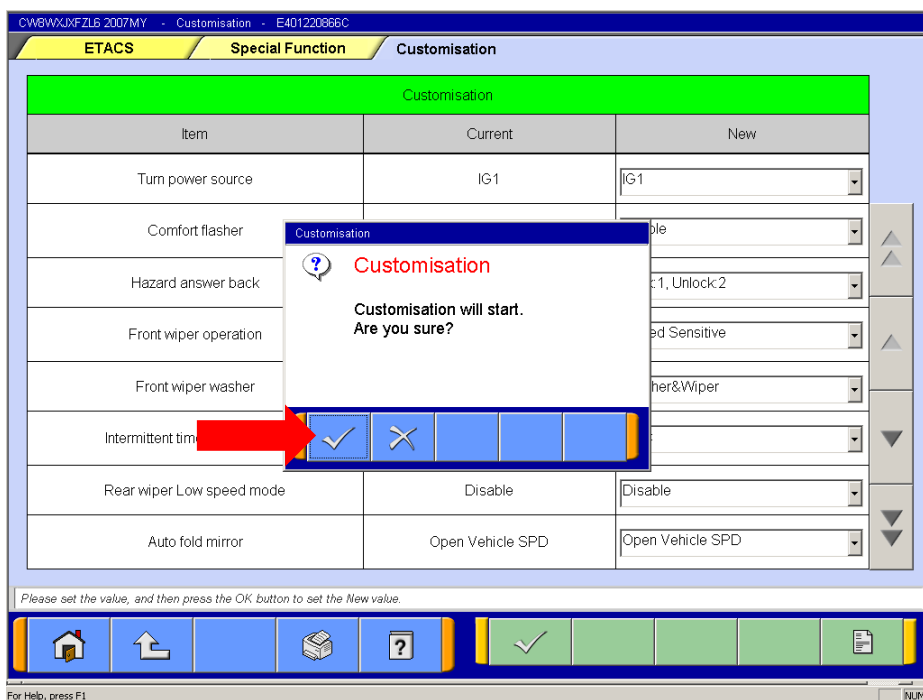


Item	Current	New
Turn power source	IG1	IG1
Comfort flasher	Enable	Enable
Hazard answer back	Lock 1, Unlock 2	Lock 1, Unlock 2
Front wiper operation	Speed Sensitive	Speed Sensitive
Front wiper washer	Washer&Wiper	Washer&Wiper
Intermittent time of rear wiper	8sec	8sec
Rear wiper Low speed mode	Disable	Disable
Auto fold mirror	Open Vehicle SPD	Open Vehicle SPD

Please set the value, and then press the OK button to set the New value.

For Help, press F1

Step 26) Click  to confirm start of customisation.



Item	Current	New
Turn power source	IG1	IG1
Comfort flasher	Enable	Enable
Hazard answer back	Lock 1, Unlock 2	Lock 1, Unlock 2
Front wiper operation	Speed Sensitive	Speed Sensitive
Front wiper washer	Washer&Wiper	Washer&Wiper
Intermittent time of rear wiper	8sec	8sec
Rear wiper Low speed mode	Disable	Disable
Auto fold mirror	Open Vehicle SPD	Open Vehicle SPD

Customisation will start. Are you sure?


Please set the value, and then press the OK button to set the New value.

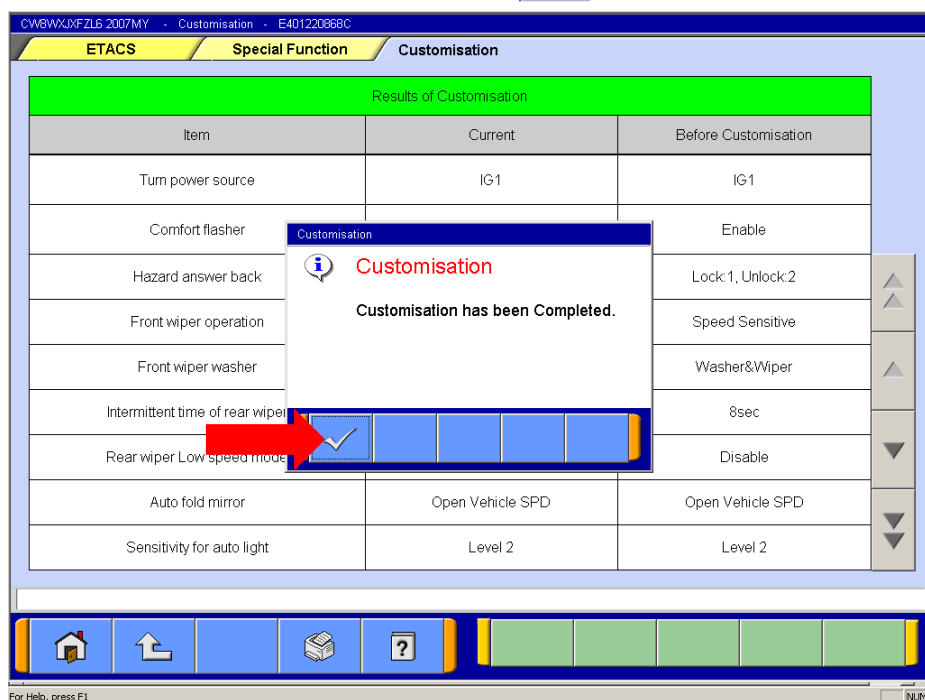
For Help, press F1

Note: For all technical and or warranty matters, please contact MME, Technical Service.

This Newsletter is NOT AN AUTHORISATION for retro fit to all vehicles, only upon receipt of a customer complaint.

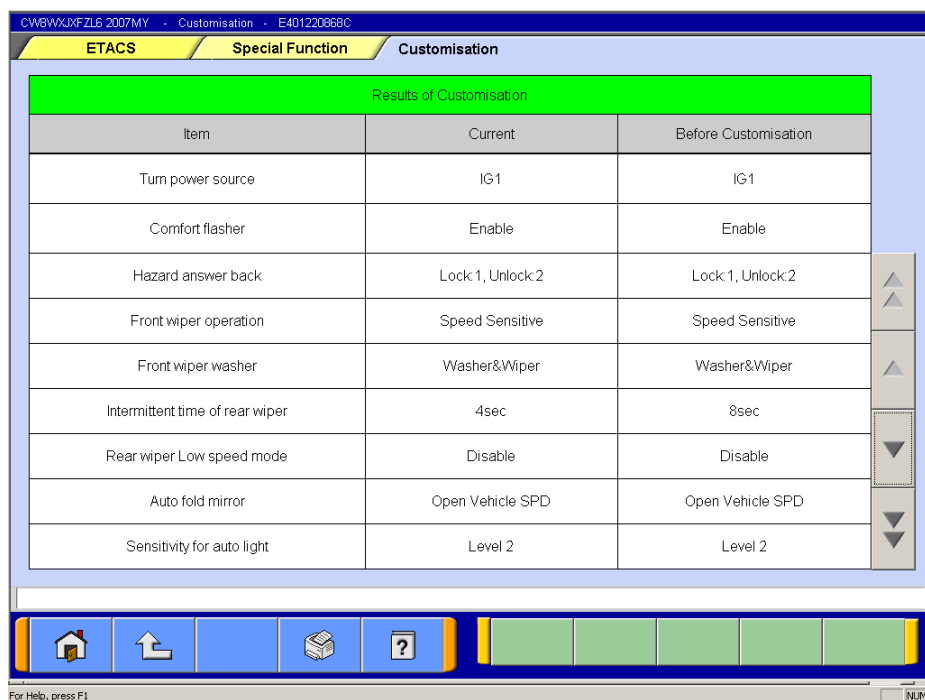
© Copyright Mitsubishi Motors Europe B.V. 2007

Step 27) Customisation has been completed, click  to continue.



Results of Customisation		
Item	Current	Before Customisation
Turn power source	IG1	IG1
Comfort flasher	Enable	Enable
Hazard answer back	Lock 1, Unlock 2	Lock 1, Unlock 2
Front wiper operation	Speed Sensitive	Speed Sensitive
Front wiper washer	Washer&Wiper	Washer&Wiper
Intermittent time of rear wiper	8sec	8sec
Rear wiper Low speed mode	Disable	Disable
Auto fold mirror	Open Vehicle SPD	Open Vehicle SPD
Sensitivity for auto light	Level 2	Level 2

Step 28) Results of customisation are being displayed; this is just for your reference.



Results of Customisation		
Item	Current	Before Customisation
Turn power source	IG1	IG1
Comfort flasher	Enable	Enable
Hazard answer back	Lock 1, Unlock 2	Lock 1, Unlock 2
Front wiper operation	Speed Sensitive	Speed Sensitive
Front wiper washer	Washer&Wiper	Washer&Wiper
Intermittent time of rear wiper	4sec	8sec
Rear wiper Low speed mode	Disable	Disable
Auto fold mirror	Open Vehicle SPD	Open Vehicle SPD
Sensitivity for auto light	Level 2	Level 2

Customisation has been successfully completed.

Procedure 2) Storing of variant coding file into M.U.T.-III.

Note: Never connect M.U.T.-III to a network.

The variant coding file has to be transferred and stored into the correct folder of the M.U.T.-III. This can be done via memory stick or CD-ROM by using for example Windows Explorer. The location of the folder where the variant coding files have to be stored is: C:\MUTSW\MUT3\CdgData.

Note: The folder CdgData will be automatically produced in M.U.T.-III at the 1st time a coding file has been copied. If the folder doesn't exist it's possible to produce it manually yourself at the above mentioned location.

If you open Windows Explorer the variant coding file can be transferred from the memory stick or CD-ROM by using for example the copy & paste function of Windows.

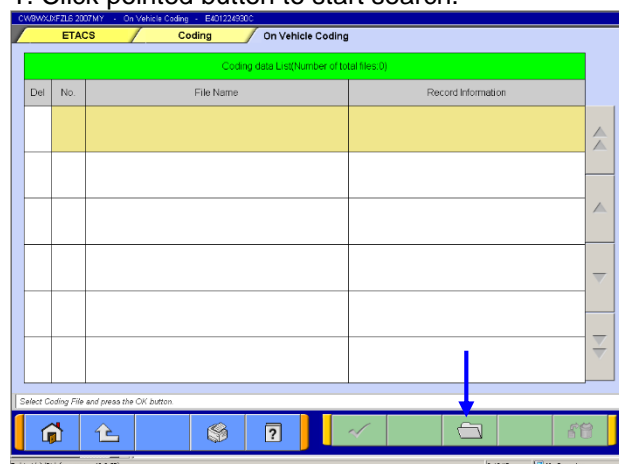
Step 1) Insert the CD-ROM or connect the memory stick with the variant coding data file.

Step 2) Open Windows Explorer.

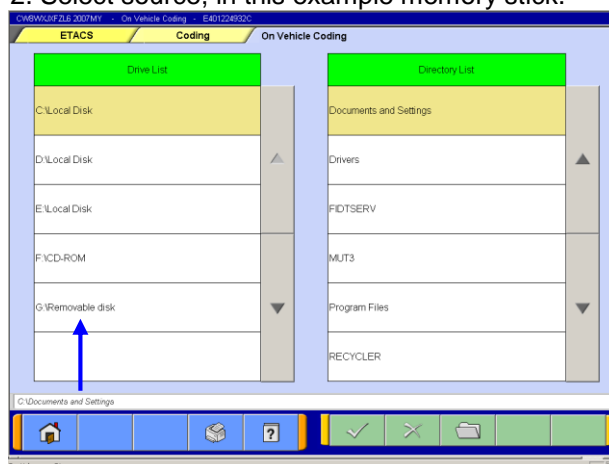
Step 3) Locate the variant coding files on the memory stick or CD-ROM and copy them by using the copy & paste function of Windows to the folder C:\MUTSW\MUT3\CdgData.

It is also possible to select the variant coding file direct from memory stick or CD-ROM during performing variant coding with M.U.T.-III; we refer to the steps below.

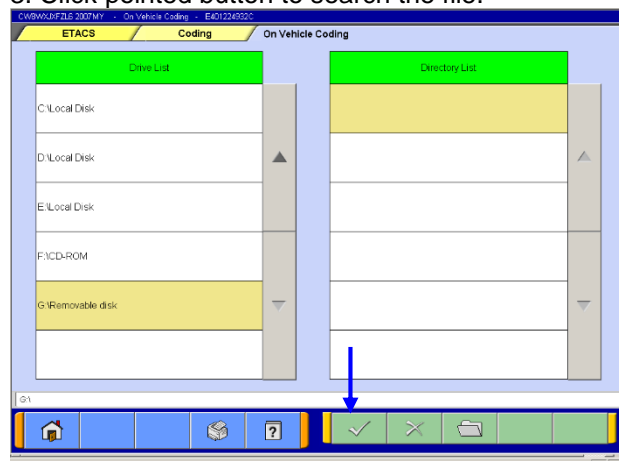
1. Click pointed button to start search.



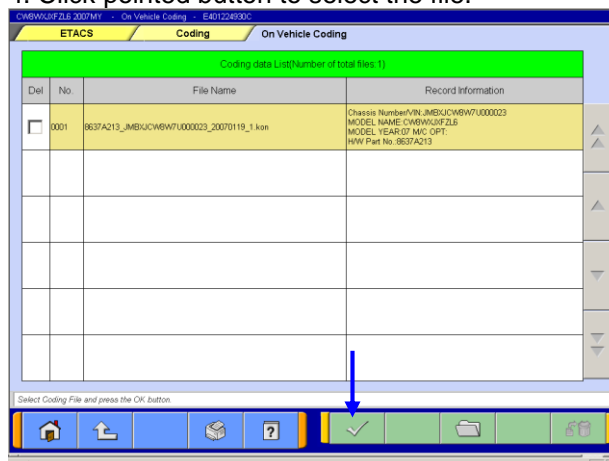
2. Select source, in this example memory stick.



3. Click pointed button to search the file.



4. Click pointed button to select the file.



Note: For all technical and or warranty matters, please contact MME, Technical Service.

This Newsletter is NOT AN AUTHORISATION for retro fit to all vehicles, only upon receipt of a customer complaint.

© Copyright Mitsubishi Motors Europe B.V. 2007